

## Facing these issues?

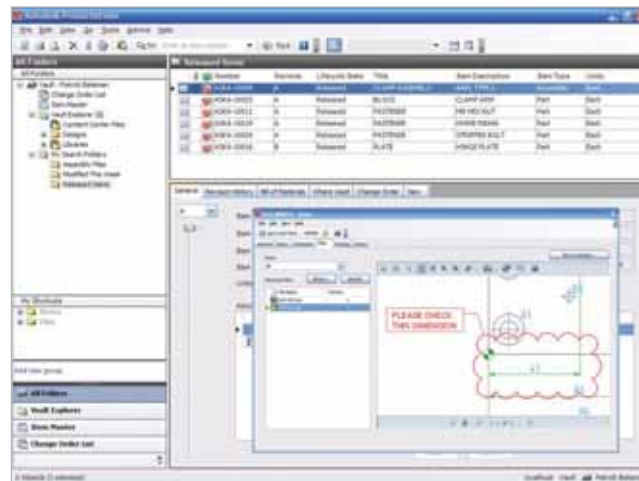
- Spending too much time searching for design data
- Re-designing parts based on existing product designs
- Cannot automatically track and record history of an ECO
- Most accurate and up-to-date design data is not reaching the right people at the right time
- Cannot easily perform change impact analysis on BOMs
- Sharing designs with customers requires them to have design software

Discover Autodesk's unique approach to data management.

# A Practical Approach to Data Management

In today's manufacturing environment, accelerating product development cycles is the key to staying ahead of the competition. By efficiently managing valuable design data in key areas such as design reuse, collaboration, and automation of key processes, your company can shorten its development cycles and get your product to market faster.

Autodesk provides a modular approach to data management that comprises several powerful Autodesk products—including Autodesk® Productstream™ software, Autodesk® Vault, the Autodesk Streamline® on-demand collaborative project management solution, and Autodesk® DWF™ technology—that enable manufacturers to accelerate product development cycles while avoiding the complications and expense of other solutions. In addition, the Autodesk approach to data management includes a worldwide network of service providers and partners focused on manufacturing to help with training, installation, and integration.



*Accelerate your development cycles and optimize your company's investment in design data by automating key processes with Autodesk data management applications.*

## Automate Release Management with Autodesk Productstream

A major factor in getting products to market faster is maintaining control of the design data until it goes into production. Obstacles to increasing productivity include changes made to drawings and models without your knowledge, out-of-date bills of materials (BOMs), and trouble sharing design information. Autodesk Productstream software automates the release-management process and allows engineering departments to maintain control over the design data after release to adjacent departments. Automating this process helps reduce costly errors and delays by minimizing manual data entry so that design changes are communicated directly back to engineering and correct parts are ordered or manufactured for a specific design. Engineering can more easily share design information knowing released information is secure and changes cannot be made without implementation of a formal engineering change order (ECO). In addition to automating release management and tracking the change order process, Autodesk Productstream manages bills of materials and enables the sharing of valuable design data with enterprise resource planning (ERP) and material requirements planning (MRP) systems, allowing downstream users to get the full value from design information.

## Manage Work-in-Progress Design with Autodesk Vault

Maximize return on your company's investment in design data by driving design reuse with Autodesk Vault functionality. A centralized data management application that securely stores and manages design data, Autodesk Vault is included at no additional cost with all Autodesk manufacturing design software. Tightly integrated with each design application, Autodesk Vault organizes all engineering data in a centralized location and reduces the time needed to find, reference, and reuse design data. As product designs evolve, version-management features in Autodesk Vault provide protection from unintentional overwriting of good designs. In addition, users can save hours of valuable design time with the powerful copy and reuse capabilities that reduce the time required to start a new design.

## Increase Collaboration with Autodesk Streamline

Efficient sharing of designs is crucial for maximum project visibility and collaboration. Autodesk Streamline is an on-demand collaborative project management solution that enables users to connect, share, and collaborate with external team members, all at minimal complexity and cost. By providing a single location to securely access shared files and collaboration tools, Autodesk Streamline makes up-to-date design information available to customers and suppliers anywhere.

## Share Your Designs with Autodesk DWF

The compact and easy-to-use Autodesk DWF file format for sharing designs offers a free and simple way for team members to publish any Autodesk design to DWF. The free\* Autodesk® DWF™ Viewer allows anyone—including customers and suppliers—to easily view and print even the most complex 2D and 3D designs. Autodesk® Design Review accelerates the design review process by providing an all-digital way to review, mark up, and revise designs without the original design creation software.



Now that we have Autodesk Vault and Productstream, we're able to automate more of the reviews for both 2D and 3D that we weren't able to do with our previous PDM system.

—Tom Coyle,  
Supervisor of the Application Support Group, Refrigeration Division of North America, YORK International